

KEY FEATURES

- 160 × 120 Resolution (Thermal), and 4 MP Resolution (Optical)
- Thermographic Accuracy ±0.9° F (±0.5° C) w/o Blackbody ±0.5° F (±0.3° C) with Blackbody
- Supports Live View on PC or External Monitor
- Supports Audio Intercom
- Supports Color Highlight Alarm and Audio Alarm

APPLICATIONS

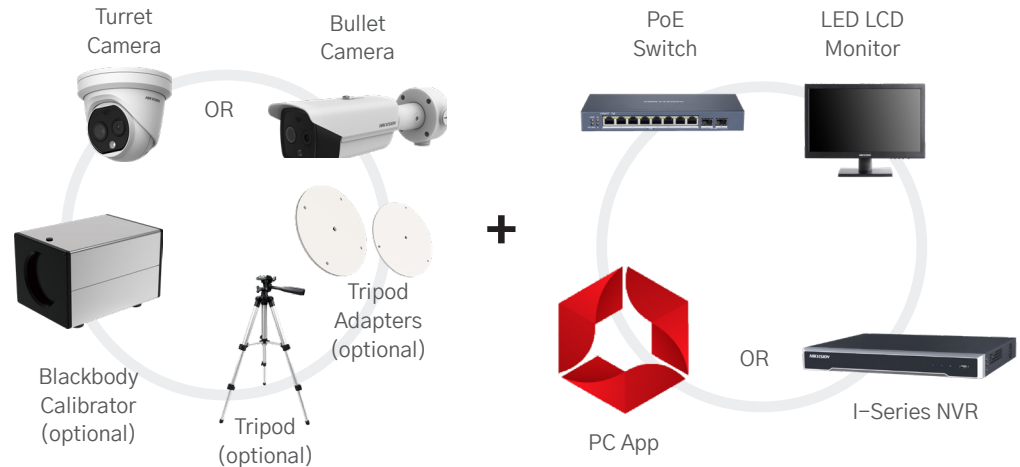
- Set Up Screening Checkpoints
- Perform Preliminary Screening
- Perform Secondary Check

BENEFITS

- Non-contact Measurement to Avoid Physical Contact
- One Second Per Person for Skin-Surface Temperature Detection
- AI Detection, Greatly Reducing False Alarms

The Mid-Range Thermal Screening Bundle allows for skin-surface temperature detection that is rapid and safe preliminary screening in public areas. Simultaneous temperature screening of multiple people greatly enhances efficiency.

The bundled thermographic handheld camera is specially designed for temperature measurement applications, where heat leaks and other abnormal changes in temperature must be identified. The sensor's 160 x 120 resolution is upscaled to 320 x 240 and features adaptive AGC (Automatic Gain Control), 3D DNR (Digital Noise Reduction), and Digital Detail Enhancement for outstanding image enhancement. The 4 MP optical sensor provides outstanding color video in very dim environments down to 0.0089 lux.



Thermal Module

Image Sensor	Uncooled focal plane arrays
Resolution	160 × 120 (Output to 320 × 240)
Pixel Pitch	17 μm
Response Waveband	8 μm to 14 μm
NETD	<40 mk (@ 25° C, F#=1.1)
Aperture	f/1.1
Temperature Accuracy	±0.9° F (±0.5° C) 2.62ft to 4.92ft
Accuracy w/ Blackbody	±0.5° F (±0.3° C)

Optical Module

Max Image Resolution	2688 × 1520
Image Sensor	1/2.7" progressive scan CMOS
Shutter Speed	1 s to 1/100,000 s
WDR	120 dB
Day/Night Mode	IR cut filter with auto switch
Minimum Illumination	Color: 0.0089 lux (f/1.6, AGC on), B/W: 0.0018 lux (f/1.6, AGC on)

Camera Differences

Camera Type	Turret Camera	Bullet Camera
Focal Length	3.1mm	6.2mm
IFOV	5.48 mrad	2.74 mrad
Field of View	50° × 37.2° (H × V)	25° × 18.7° (H × V)
Min. Focusing Distance	0.2 m	0.6 m
IR Distance	Up to 15 m	Up to 40 m
Alarm Input	1-ch inputs (0-5 VDC)	2-ch inputs (0-5 VDC)
Alarm Output	1-ch relay outputs, alarm response actions configurable	2-ch relay outputs, alarm response actions configurable
Dimensions	5.45"×5.45"×4.85"	14.10"×4.47"×4.53"
Weight	2.07lbs	3.88lbs

Image Function

Bi-Spectrum	Fusion view of thermal view and overlaid details of the optical channel
Image Fusion	
Picture-in-Picture	Combines details of thermal and optical image PIP, overlay thermal image on optical image

Integration

RJ-45	x1
RS-485	x1
SD Card Slot	x1
Reset Button	x1

General

Power	PoE (802.3af, class 3), 42.5V to 57V, 0.14 A to 0.22 A; DC 12V, 0.5A
Power Consumption	Maximum 6W
Protection Level	IP66 Standard
Working Temperature*	50° to 95° F
*indoor and windless environment use only	(10° to 35° C)